

SAFETY FOOTWEAR RANGE

NEW FOOTWEAR
RANGE WITH

COOLMAX[®]

KRUSHERS[™]
STRONG FOR US



True legacies of strength.

Since 2000, your hardworking attitude has inspired us to make the strongest and most robust safety footwear for you.

Whatever keeps you moving, you always want to feel comfortable and protected. No job site, no matter how rugged, comes close to challenging the strength and durability of our safety boots. From the remote mines to the factory floor, no work gear works harder than KRUSHERS®.

With KRUSHERS® boots you've met your match in strength and reliability. So, equip yourself and your team to become true legacies of strength.

KRUSHERS® - STRONG FOR US.



**STRONGER
FOR LONGER.
KRUSHERS®**

THE KRUSHERS BOOT STRENGTH® TECHNOLOGY

Enhancing Durability and Functionality from the Inside Out

Packed with technologies for extra strength, comfort, and functionality, KRUSHERS® Safety Footwear is built to work as hard as you do.

BENEFITS OF THE KRUSHERS® TPU/PU SOLE

The TPU and unique construction makes KRUSHERS® tougher than boots from leading competitor brands, without sacrificing comfort and lightness.

EXCELLENT LONG-TERM MECHANICAL PROPERTIES:

- ✓ High abrasion resistance
- ✓ High tensile and tear strength
- ✓ Good flexibility
- ✓ Better weather resistance
- ✓ Good chemical and oil resistance
- ✓ Good hydrolysis and microbial resistance

SAFER

- ✓ Better slip resistance
- ✓ Better oil and fuel resistance
- ✓ Recyclable and environmentally friendly TPU as per the EU directive 2011/65/EU

MORE COMFORTABLE

- ✓ Follows the arch contour
- ✓ Better flexibility in movement
- ✓ Better cushioning
- ✓ Lighter option (models with COOLMAX®)

Breathable Full Lining

Optional COOLMAX® liner for ultimate comfort.

Reinforced Heel Support

Padded heel counter provides ankle stability, added comfort and extends the durability of the shoe.

3

Reinforced Stabilizing Shank

For additional arch support and sole integrity.

TPU or Nitrile Rubber Outsole Option

Standard TPU outsole with superior durability and excellent slip resistance. Rubber outsole optional.

Durable Uppers

Full grain leather, tensile- and tear-resistant. Triple reinforced for comfort. Quadruple reinforced in the heel area for extra durability.



Steel or Composite Toe Cap Options

Impact resistance 200J and compression resistance 15,000N.



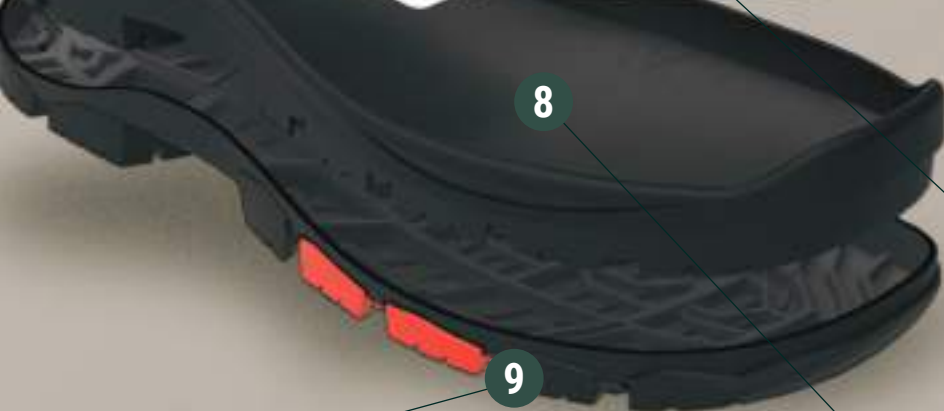
Full Length Insock

Full length inner sole offers support and comfort.



Flexible Insole Board

Abrasion resistant, anti-static material with stitch-holding properties and flex perforations.



Lightweight Polyurethane Midsole

Optimum underfoot cushioning and reduced overall weight.

TOUGH TIMES NEVER LAST - BUT TOUGH BOOTS DO!

Designed in Australia and Germany to Withstand the Harshest Conditions



ALASKA

PRODUCT CODE: 216154

4" Lace-up Shoe with
Padded Top Line

BLACK BROWN

BOSTON

PRODUCT CODE: 216134

4" Slip-on Shoe with
Padded Top Line

BLACK



STANDARD FEATURES OF CLASSIC RANGE:



Dual density
TPU/PU direct
injection sole



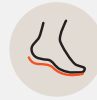
Buffalo full grain
leather upper



200J & 15KN
compression
steel toecap



Breathable
lining



Flexible
insole



SRC



Sizes: 4-13
(includes
half sizes)

OPTIONAL PRODUCT FEATURES:



Nitrile rubber
outsole



Single density
PU outsole



Steel
midsole



Anti-static

UTAH

PRODUCT CODE: 216135

4" Lace-up Shoe with
Padded Top Line

BLACK



FLORIDA

PRODUCT CODE: 216159

6" Lace-up Ankle Boot
with Padded Top Line

BLACK BROWN



TULSA

PRODUCT CODE: 216190

6" Zip-sided Boot with Padded Top Line

 BLACK

TEXAS

PRODUCT CODE: 216125

9" Pull-on Riggers Boot

 BLACK  BROWN



DALLAS

PRODUCT CODE: 216120

6" Lace-up Ankle Boot
with Padded Top Line

BLACK



NEVADA

PRODUCT CODE: 216141

6" Elastic-sided Boot

BLACK BROWN

AFFORDABLE PERFORMANCE KRUSHERS®

Opposites attract: lightness & strength.

KRUSHERS® safety footwear offers a selection of all-rounders for women that provide extreme durability at the most attractive prices.

You can now go a strong step ahead with our ladies safety shoes that were developed with an ergonomic design to support the female foot anatomy. They provide optimum fit and comfort for women's feet with a smaller instep, as well as a shorter ankle and span from ball to heel.

E.



ENGINEERED FOR A FEMALE FOOT ANATOMY

Manufactured on Specific Female Lasts



MAUD

PRODUCT CODE: 214081

6" Zip-sided Boot

 BLACK

BINDI

PRODUCT CODE: 214082

6" Elastic-sided Boot

 BLACK



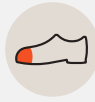
STANDARD FEATURES OF WOMEN'S RANGE:



Dual density
TPU/PU direct
injection sole



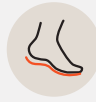
Buffalo full grain
leather upper



100J
compression
steel toecap



Breathable
lining



Flexible
insole



SRC



Sizes: 4-10
(includes
half sizes)

OPTIONAL PRODUCT FEATURES:



Steel
midsole



Anti-static

HOPE

PRODUCT CODE: 214083

Lace-up Shoe

 BLACK



ADELE

PRODUCT CODE: 214080

Loafer Style Slip-on Shoe

 BLACK

COOLER COMFORT. KRUSHERS®



DON'T SWEAT IT! WE'VE GOT YOUR BACK

COOLMAX® Liner with Outstanding Temperature, Moisture & Odor Control



NEW! ULTRA-BREATHABLE
ANTI-ODOR LINING



COOLING
COMFORT



ANTI-
MICROBIAL



MOISTURE-
WICKING



FAST
DRYING



ODOR
CONTROL



ULTRA
DURABLE

STANDARD FEATURES OF COOLMAX® RANGE:



Lightweight



Dual density
TPU/PU direct
injection sole



Buffalo full
grain leather
upper



200J & 15KN
compression
steel toecap



COOLMAX®
breathable
lining



Flexible
insole



SRC slip
resistance



Sizes: 4-13
(includes
half sizes)

OPTIONAL PRODUCT FEATURES:



Non-metallic
toecap and
midsole



Double density
PU/Nitrile rub-
ber outsole



Steel
midsole



Anti-static



Printed leather
upper

COOLMAX® SAFETY RANGE



COOLER COMFORT. KRUSHERS®

COOLMAX®

OREGON

PRODUCT CODE: 218065

9" Pull-on Riggers Boot

BLACK BROWN

COOLMAX®

MONTANA

PRODUCT CODE: 218064

6" Elastic-sided Boot

BLACK BROWN



COOLMAX®

COLORADO

PRODUCT CODE: 218063

6" Lace-up Ankle Boot with Padded Top Line

BLACK BROWN

COOLMAX®

MARYLAND

PRODUCT CODE: 218061

4" Lace-up Shoe
with Padded Top Line

BLACK BROWN



COOLMAX®

CALIFORNIA

PRODUCT CODE: 218069

6" Lace-up Ankle Boot
with Padded Top Line

BLACK BROWN



COOLMAX®

HOUSTON

PRODUCT CODE: 218062

4" Slip-on Shoe with
Padded Top Line

BLACK BROWN



ATHLETIC PERFORMANCE KRUSHERS®

A close-up photograph of a person's hand adjusting a black and orange KRUSHERS safety shoe on a concrete ledge. The shoe has a white sole and a black sock with the brand name 'KRUSHERS' visible. The background is a blurred green field.

Safety in style with the new sporty range.

Stay ahead of the game with KRUSHERS® new line of safety shoes – the perfect blend of style and safety. Our jogger-style shoes combine lightweight protection with an athletic look, and feature a COOLMAX® lining for extra breathable comfort.

You'll be swift on your feet with the new sporty sole that provides unbeatable durability and outstanding slip-resistance. They're perfect for warehousing, transportation, manufacturing and other industries.

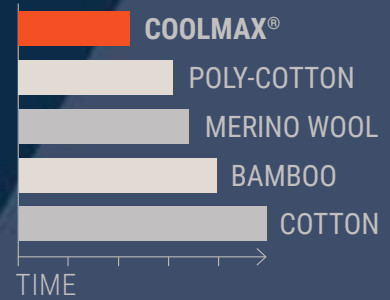
E.



QUICK DRYING, HIGHLY BREATHABLE, PERMANENT COOLING PERFORMANCE



COMPARISON OF FABRIC DRYING TIMES



STANDARD FEATURES OF THE SPORTY COOLMAX® RANGE:



Lightweight



Dual density
TPU/PU direct
injection sole



Woven fabric
upper



Non-metallic
toecap
200J & 15KN



COOLMAX®
breathable
lining



Flexible
insole



SRC slip
resistance



Sizes: 4-12
(includes
half sizes)

OPTIONAL PRODUCT FEATURES:



Anti-static



Non-metallic
midsole

COOLMAX®

ARIZONA

PRODUCT CODE: 316650

4" Lace-up Sport Shoe

BLACK SILVER



Metal-free convenience

Experience lightweight comfort and easy travels with our airport-friendly non-metallic sporty shoes. Featuring a composite toecap, you'll breeze through the security checks without hassle.



BLACK

COOLMAX®



BLUE

COOLMAX®



GREY SILVER

COOLMAX®

SAFETY FOOTWEAR RANGE

KRUSHERS®
CLASSIC RANGE



Cleated pattern for high slip resistance

**DIRECT INJECTION
GENERAL PURPOSE SOLE**

Abrasion-resistant
TPU outsole

Shaped for stability
and extra durability

KRUSHERS®
COOLMAX® RANGE



Cleated pattern for high slip resistance

**DIRECT INJECTION
SPORTY SOLE**

Abrasion-resistant
TPU outsole

Cleated pattern for a perfect heel strike



KRUSHERS®
SPORTY COOLMAX®
RANGE

Shaped for stability
and extra durability

Cleated pattern optimized
for muddy and wet areas

KRUSHERS®
CLASSIC RANGE



Shaped for stability
and extra durability

ALL RUBBER SOLE

300°C heat resistant
(HRO) heavy duty sole

KRUSHERS®
COOLMAX® RANGE



EXCELLENT SLIP RESISTANCE

STANDARD			EURO	KRUSHERS® CLASSIC	KRUSHERS® COOLMAX®	KRUSHERS® SPORTY COOLMAX®
SRC (SRA+SRB)	SRA TEST FLOOR CERAMICS LUBRICANT WATER + DETERGENT	FLAT	≥ 0.32	0.39	0.42	0.41
		HEEL CONTACT ANGLE 7	≥ 0.28	0.36	0.37	0.38
	SRB TEST FLOOR STEEL LUBRICANT GLYCERIN	FLAT	≥ 0.18	0.23	0.22	0.19
		HEEL CONTACT ANGLE 7	≥ 0.13	0.21	0.24	0.17

OPTIONS FOR MAXIMUM SAFETY

ANTI-STATIC (A) STATIC DISSIPATIVE (SD)

The optional anti-static properties reduce the accumulation of excess static electricity by conducting body charge to ground while maintaining a sufficiently high level of resistance to protect the wearer from electrical hazard due to live electrical circuits.


PENETRATION RESISTANT (P) PUNCTURE RESISTANT (PR) MIDSOLE


The optional stainless steel or composite midsole will prevent any sharp object from penetrating the boot through the sole. It is fully rust-proof and won't crack or split with flexing of the sole.


PERFECT COMFORT WITH THE RIGHT FIT


UK	4	4.5	5	5.5	6	6.5	7	7.5	8	8.5	9	9.5	10	10.5	11	11.5	12	12.5	13	13.5
US	5	5.5	6	6.5	7	7.5	8	8.5	9	9.5	10	10.5	11	11.5	12	12.5	13	13.5	14	14.5
EUR	37	37.5	38	39	40	40.5	41	41.5	42	42.5	43	44	45	45.5	46	46.5	47	47.5	48	48.5

CONNECT WITH US

 krushers.net

 info@krushers.net

 [/krushersofficial](https://www.facebook.com/krushersofficial)

 [/krushersofficial](https://www.instagram.com/krushersofficial)

OFFICIAL KRUSHERS® DISTRIBUTOR:



6-MONTH MANUFACTURER'S WARRANTY

This product is warranted from material and construction defects if sold in manufacturer's condition for a period of six months from date of purchase. The warranty is only valid if in the opinion of the manufacturer the footwear has been used in appropriate conditions suitable for the particular type of footwear. It shall be void if in the opinion of the manufacturer it has been incorrectly fitted, abused and used in conditions for which it was not suitable. Some of these abusive conditions include and are not limited to exposure of chemicals, cement, lime and excessive water and heat (fit for purpose). Abuse includes cuts, burns & excessive forces (such as kicking) being used in contact with the footwear.

KRUSHERS® SAFETY FOOTWEAR COMPLIES WITH THE FOLLOWING CERTIFICATIONS:

